

HIGHLIGHTS

Price of the apartment	150,000 €
Apartment area in sqm	42
Price per sqm	3,571 €
Construction year	2006

A lovely ground floor apartment in a great location, just 100m from the famous Panathenaic Stadium in Athens, located in Pagrati neighborhood in the center of Athens – one of the most popular and trendy neighborhoods in the capital of Greece.

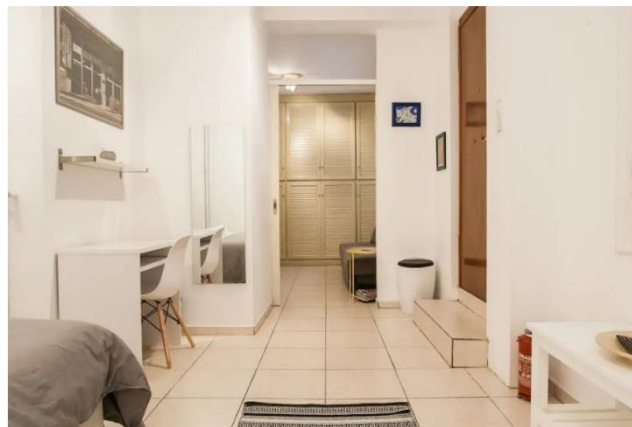
Completely renovated in 2017. The apartment is fully furnished and equipped and is intended for long term rental. The apartment was rated extremely high (9.5) on Booking based on its safety and location.

The apartment has 1 bedroom and 1 bathroom, and up to 4 people can be accommodated in it (by using a scrolling partition).

The main entrance to the apartment is powered by an internet app from anywhere in the world.

The apartment has two air conditioning units and 3 built-in heating units.

Underground parking is located only 30m from the apartment (extra charge).



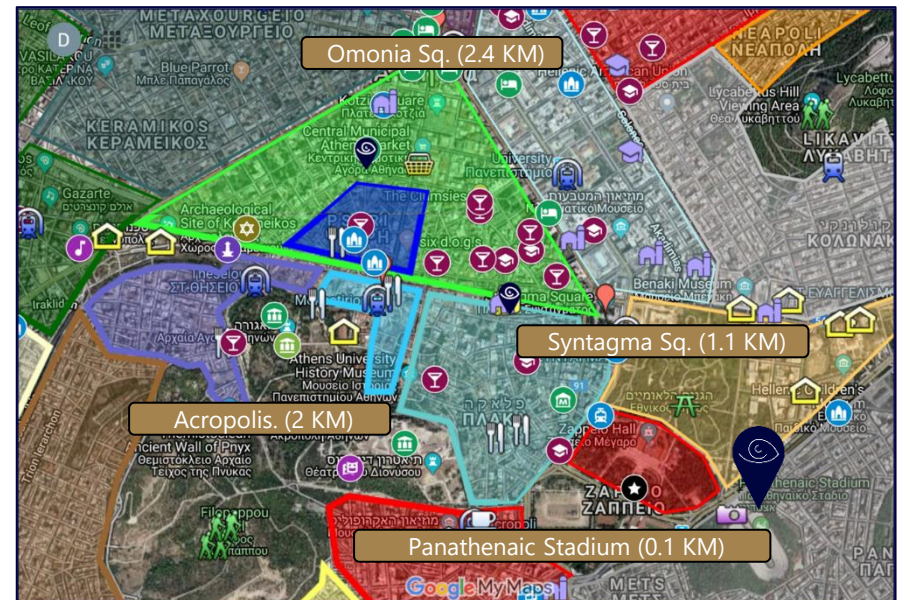
ABOUT THE AREA



The apartment is close to the imposing Panathenaic Stadium, where the first modern Olympic Games were held in 1896. The only stadium in the world made entirely of marble. The neighborhood has modern office spaces, boutique clothing stores which are mixed with cafés, restaurants, bars and art galleries. The first study-abroad program in Greece for English-speaking undergraduate students was established in 1962 in Pagrati.

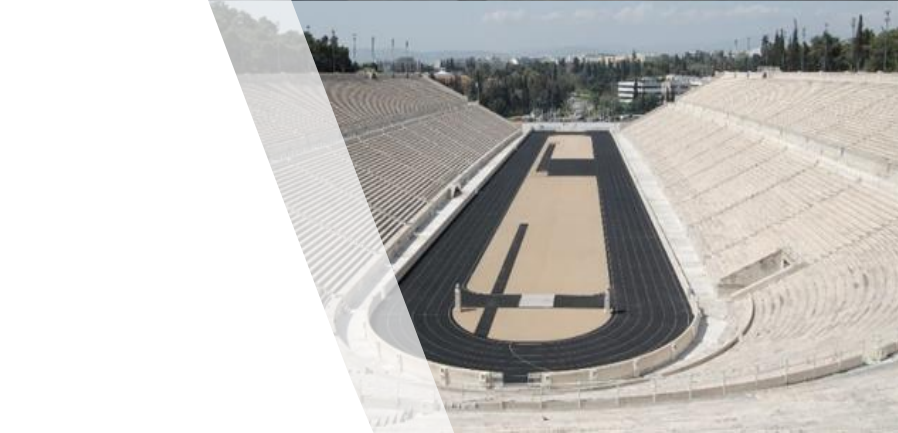
The nearest metro station is Evangelismos Station, 1 km from the apartment, with line 3 (that also arrives to the airport).

Distance from Panathenaic stadium in km	0.1
Distance from a metro station in km	1
Distance from Syntagma square in km	1.1
Distance from Monastiraki in km	1.9
Distance from Acropolis in km	2
Distance from Omonia square in km	2.4
Distance from Athens airport in km	32



PLACES OF INTEREST

- **Panathenaic Stadium** - The only stadium in the world made entirely of marble. The stadium was renovated for the first modern Olympics in 1896 and today underneath the stadium there is a museum to commemorate the modern Olympic competitions, and its upper part has a spectacular view of the city (100m from the property).
- **Alsos Park** - The beautiful pine trees park was established in 1903 by the neighborhood residents (600m from the property).
- **Olympic Zeus Temple** - When the Olympic Zeus Temple was complete, it was larger than the huge Parthenon on the Acropolis and considered the largest temple in ancient Greece. Today, only 15 of its pillars can be seen, but they are still impressive and demonstrate how large and magnificent the temple was. In the vicinity of Olympic Zeus Temple, there are a number of historic buildings and monuments, such as the 18-meter Arch of Hadrian, which was also erected in honor of Hadrian, a public Roman bathhouse and several Roman temples. (800m from the property).
- **National Art Gallery** – Alexandros Soutzos Museum (1km from the property).
- **First Cemetery of Athens** - The first cemetery in Athens has become an artistic, architectural, spiritual creation that commemorates the historical memory through the special tombstones and their poetry and written words. Its construction began in 1837 and it was expanded in the 1940s to include plots for Protestants, Catholics and Jews. (1 km from the property).





RESTAURANTS & NIGHTLIFE CLOSE TO THE PROPERTY

- Loopers - Escape room complex (240m from the property)
- Magemenos Avlos - one of the oldest and well-known restaurants in Athens (350m from the property)
- Arbaroriza - A restaurant specializing in brunches (400m from the property)
- Mystic - Vegetarian pizzeria (400m from the property)
- Banana Athens - Wine bar and cocktails (400m from the property)
- Chelsea Bar - One of the trendiest bars in Athens (450m from the property)
- Chalk of the Town - Workshops Center (450m from the property)
- Mavro Provato - A trendy Greek restaurant serving traditional cuisine with modern touches (450m from the property)
- No Name café - Cafe-Bar Library (450m from the property)
- Mouries - Traditional Greek tavern (600m from the property)
- Sporaki - Irish pub (600m from the property)
- Flamingo Cocktail bar (600m from the property)
- T & Toggs - A popular café known for its pancake dishes (650m from the property)
- Baba Ghanoush - Trendy Falafelia (650m from the property)
- Superfly Cafe - Retro cafe designed with 1980s computer games, comic magazines and the like (700m from the property)
- Spondi - Michelin-starred chef restaurant (700m from the property)
- Colibri Restaurant - Favorite of the locals (850m from the property)



Academic Institutions near the Property

- College Year Athens (220m from the property)
- New York College (1km from the property)
- University of Cambridge ESOL (1.4km from the property)
- Webster Athens (1.4km from the property)
- Athens University (1.5km from the property)
- IST College | Independent Studies of Science & Technology (1.6km from the property)
- iCon International Training (1.9km from the property)
- Technical University (4.2km from the property)

