



# FINDERS

Tailor Made Investments



## HIGHLIGHTS

|                        |           |
|------------------------|-----------|
| Price of the apartment | 195,000 € |
| Apartment area in sqm  | 42        |
| Price per sqm          | 4.642 €   |
| Renovation year        | 2024      |



A lovely ground floor apartment in a great location, just 100m from the famous Panathenaic Stadium in Athens, located in Pagrati neighborhood in the center of Athens – one of the most popular and trendy neighborhoods in the capital of Greece.

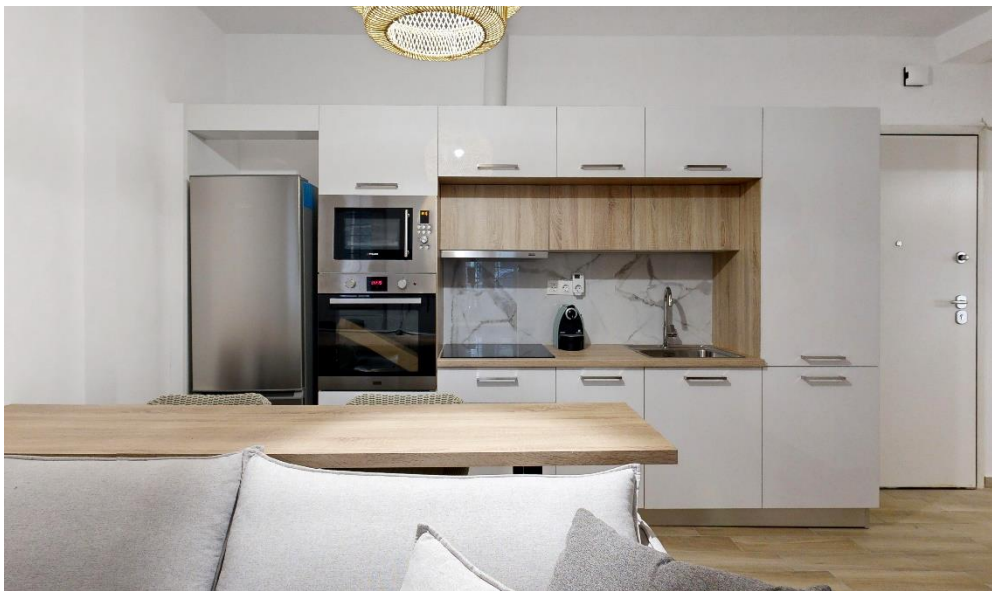
Completely renovated in 2017 & 2024. The apartment is fully furnished and equipped. The apartment has 1 bedroom, 1 living room with an open space kitchen and the sofa can be turned into a bed for 2 people.

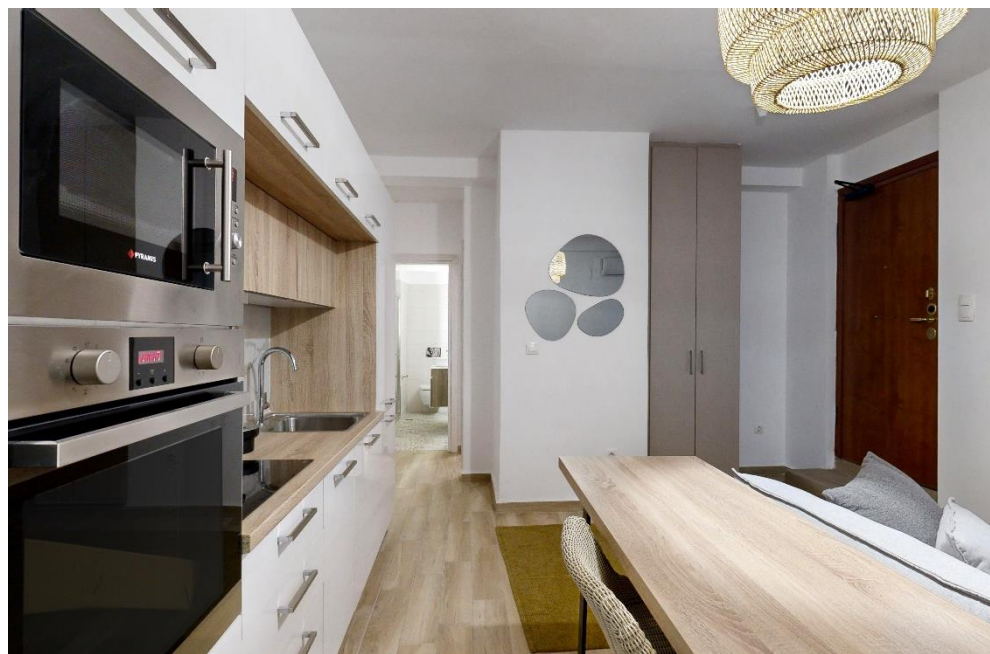
The bedroom has a spacious closet and another storage closet is in main living area with discretion.

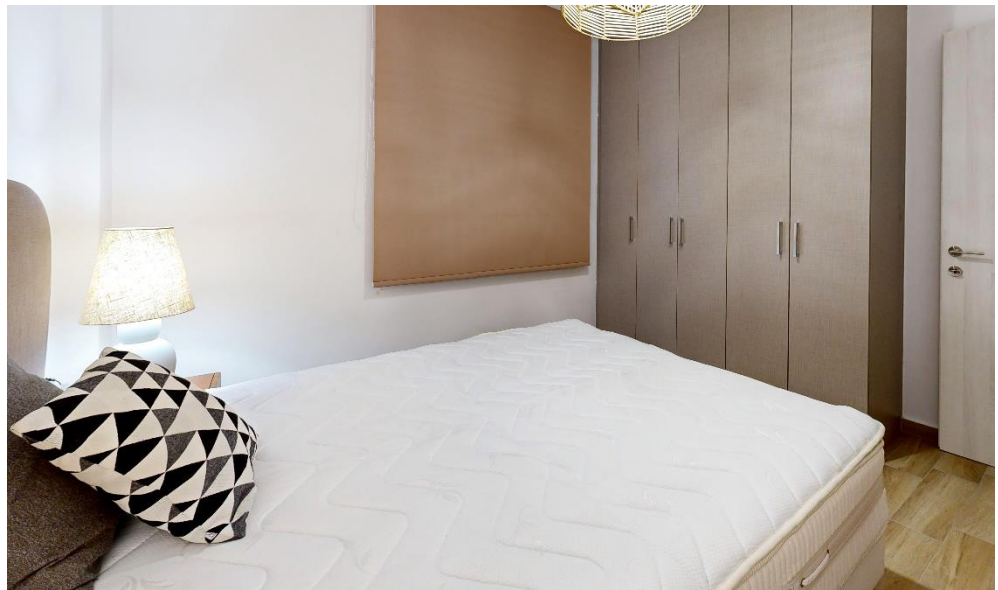
Also, there are two entrance, one from the side of Ioanni Fokianos 27 and another from the Vassileos Konstantinou Avenue. Both entrance doors are secure.

Virtual Tour:

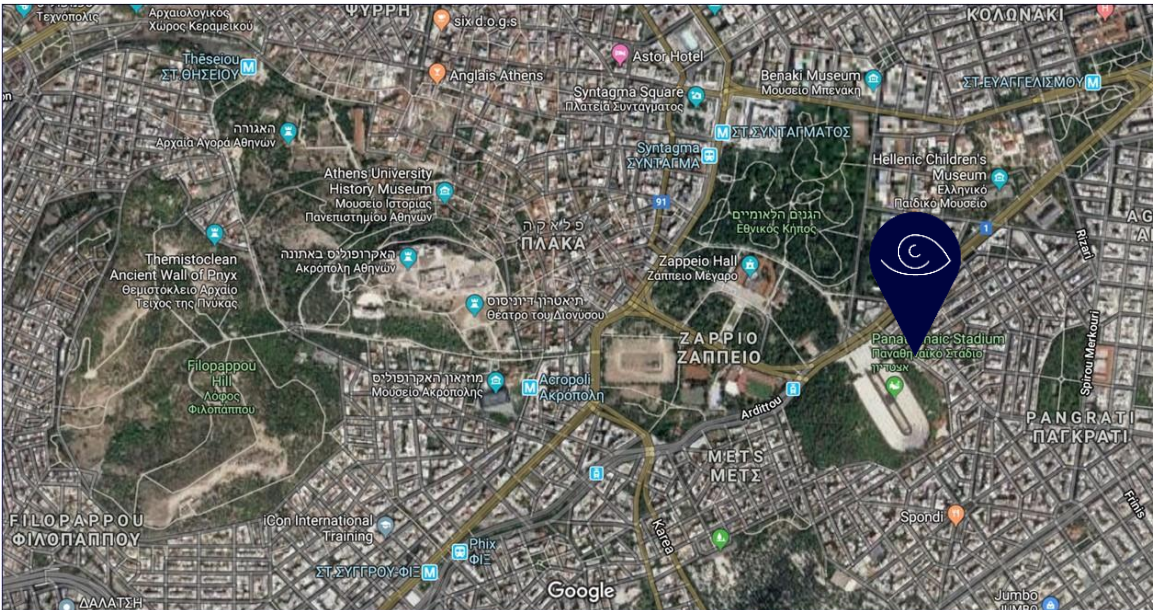
[Chic Apartment at Ioannou Fokianou 27, Athens  
\(matterport.com\)](https://matterport.com)







MAP & STREET VIEW



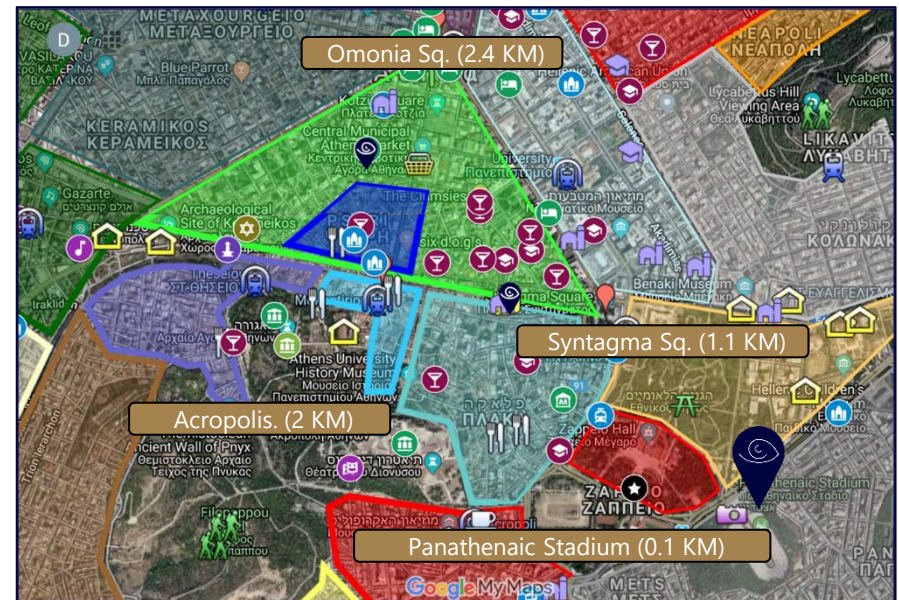
## ABOUT THE AREA



The apartment is close to the imposing Panathenaic Stadium, where the first modern Olympic Games were held in 1896. The only stadium in the world made entirely of marble. The neighborhood has modern office spaces, boutique clothing stores which are mixed with cafés, restaurants, bars and art galleries. The first study-abroad program in Greece for English-speaking undergraduate students was established in 1962 in Pagrati.

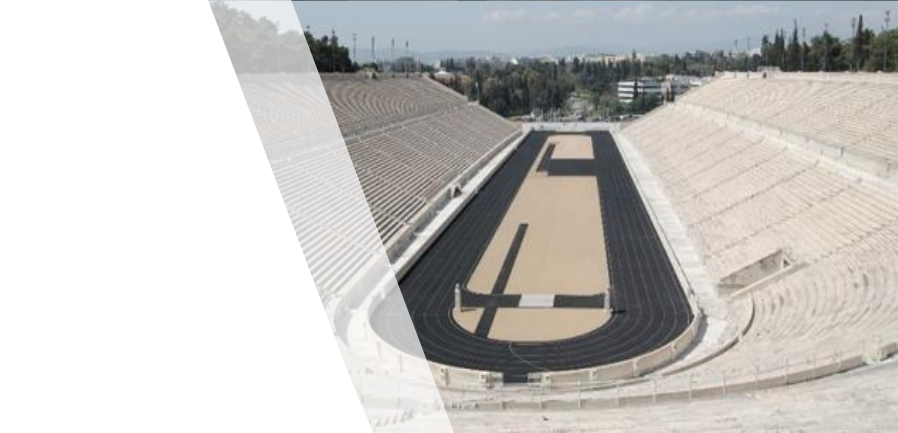
The nearest metro station is Evangelismos Station, 1 km from the apartment, with line 3 (that also arrives to the airport).

|   |     |
|---|-----|
| Distance from Panathenaic stadium in km | 0.1 |
| Distance from a metro station in km     | 1   |
| Distance from Syntagma square in km     | 1.1 |
| Distance from Monastiraki in km         | 1.9 |
| Distance from Acropolis in km           | 2   |
| Distance from Omonia square in km       | 2.4 |
| Distance from Athens airport in km      | 32  |



## PLACES OF INTEREST

- **Panathenaic Stadium** - The only stadium in the world made entirely of marble. The stadium was renovated for the first modern Olympics in 1896 and today underneath the stadium there is a museum to commemorate the modern Olympic competitions, and its upper part has a spectacular view of the city (100m from the property).
- **Alsos Park** - The beautiful pine trees park was established in 1903 by the neighborhood residents (600m from the property).
- **Olympic Zeus Temple** - When the Olympic Zeus Temple was complete, it was larger than the huge Parthenon on the Acropolis and considered the largest temple in ancient Greece. Today, only 15 of its pillars can be seen, but they are still impressive and demonstrate how large and magnificent the temple was. In the vicinity of Olympic Zeus Temple, there are a number of historic buildings and monuments, such as the 18-meter Arch of Hadrian, which was also erected in honor of Hadrian, a public Roman bathhouse and several Roman temples. (800m from the property).
- **National Art Gallery** – Alexandros Soutzos Museum (1km from the property).
- **First Cemetery of Athens** - The first cemetery in Athens has become an artistic, architectural, spiritual creation that commemorates the historical memory through the special tombstones and their poetry and written words. Its construction began in 1837 and it was expanded in the 1940s to include plots for Protestants, Catholics and Jews. (1 km from the property).







# FINDERS

Tailor Made Investments

## CONTACT US

- 26 Harokmim St, Holon (Building C, 4th Floor), 5885849, Israel
- 3<sup>rd</sup> Septemvriou 17, Athens, 10432, Greece
- Tel: +972-3-9565657
- Tel: +30 210 32 38 083
- Mail: [office@finders.co.il](mailto:office@finders.co.il)
- Web: [Finders.co.il](http://Finders.co.il)